

Community Screening vs Community Testing: Know the difference and play your part!

Screening: **no-touch!**



The screening team consists of community healthcare workers - these valuable frontline workers use a tablet or cellphone to fill out a questionnaire with all the people in a household without necessarily entering a home or having close contact with people, this team also hands out IEC materials and makes sure correct information is shared with communities.

Do not touch anyone, not even to greet! A friendly wave is okay!

Fill out the questionnaire using the tablet or cellphone.

Maintain a **2m distance** between yourself and the person you are screening.

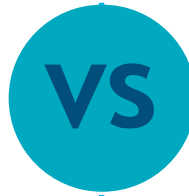


COMMUNITY HEALTHCARE WORKERS (CHWs)

Screen all the people in a household by doing the questionnaire with each individual.

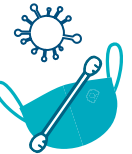
SANITISE your hands, do not touch your face, wear a mask!

Each CHW screening team needs to visit 25 households per day - work fast but thorough.



Testing & Contact Tracing

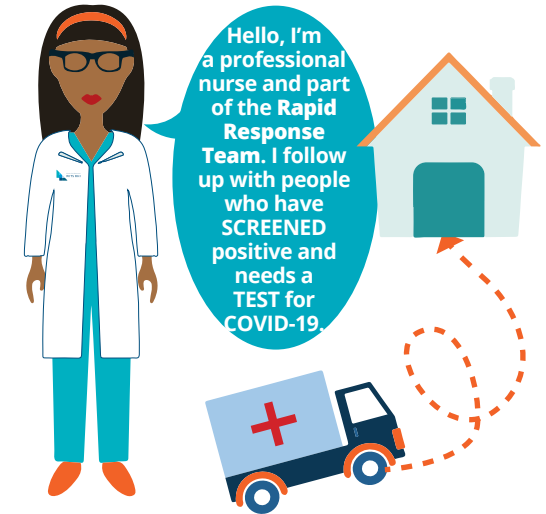
The testing and contact tracing team consists of professional healthcare workers, like nurses - they are alerted by the SCREENING team if a person SCREENS positive and needs to be tested for COVID-19, and is dispatched to the household to follow up with a COVID-19 test OR directs a person to their nearest testing centre. They also follow up close contacts of people who have tested positive.



The RRT is available in the ward where CHWs are doing screening and able to go to homes as required.

If an individual SCREENS positive, the CHW will let the RRT know who will follow up with a TEST.

The RRT will determine if an individual has to self-isolate or be considered for quarantine.



PROFESSIONAL NURSE - RAPID RESPONSE TEAM (RRT)

Hello, I'm a professional nurse and part of the Rapid Response Team. I follow up with people who have SCREENED positive and needs a TEST for COVID-19.

Remember your hotline numbers:

IT Helpdesk: 012 492 7896
COVID-19 Hotline: 0800 029 999
AIDS Helpline: 080 001 2322

Note on infection control: While you are out in the field avoid removing your mask, touching your face, and try to consistently maintain a safe distance (2 meters) from the persons you encounter and use hand sanitizer regularly. (Source: CHW Cheat Sheet, 2020, PEPFAR NDOH FPD)